



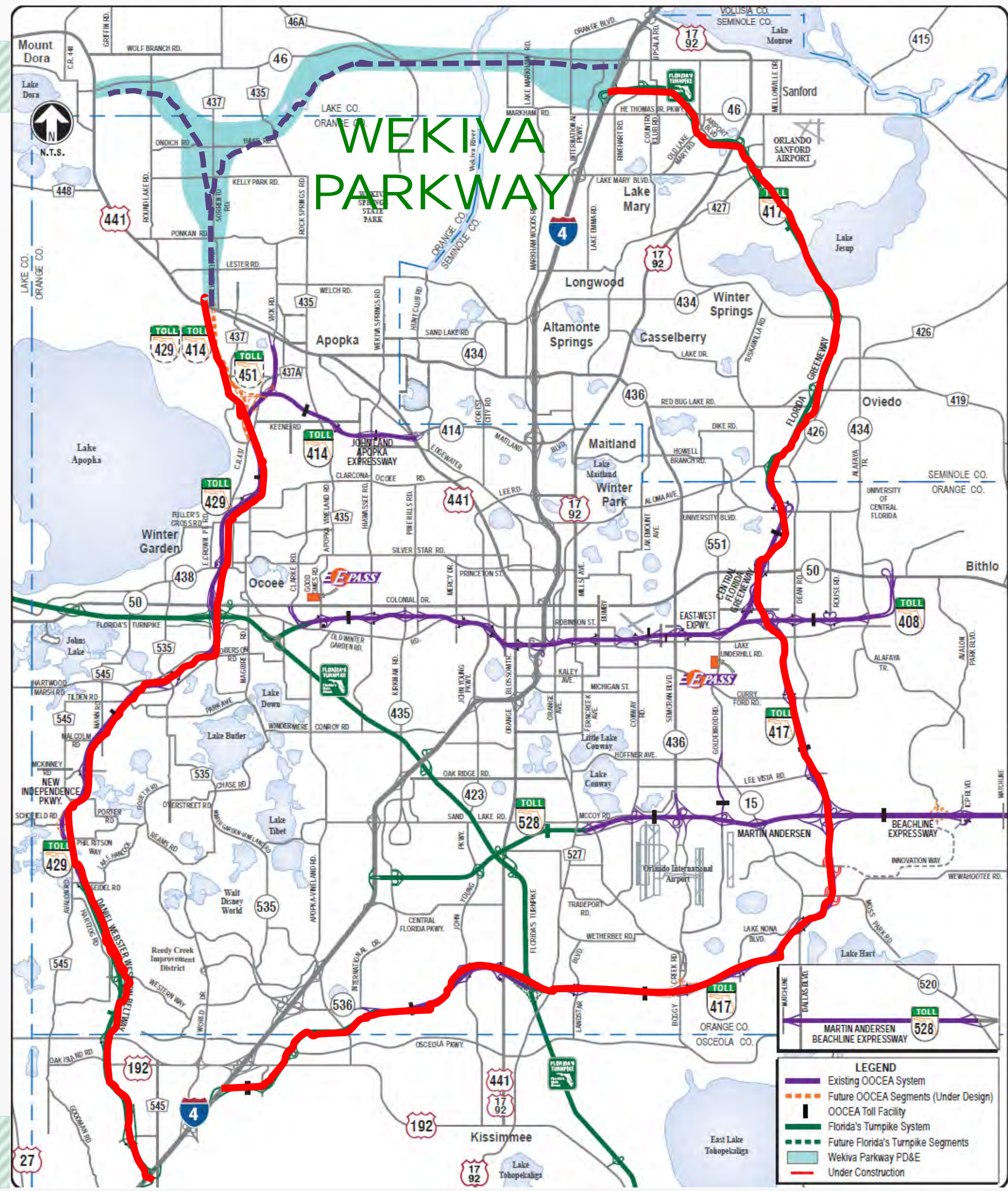
A Regional Transportation Solution

Lake Forest HOA
Community Affairs Committee

June 13, 2016



WEKIVA PARKWAY



WEKIVA PARKWAY

Project Description

- **\$1.6 Billion Completion of Central Florida's Beltway**
- **25-mile Toll Road**
- **Non-Toll Road Improvements:**
 - Improving SR 46 in Lake & Seminole Counties
 - Rebuilding the US 441/SR 46 Interchange
 - Parallel Service Roads in East Lake & Seminole Counties
- **Multi-use Trail (Parts of East Lake & Seminole Counties)**
- **Nearly 36,000 Jobs (FHWA Formula: Direct & Indirect)**

CENTRAL
FLORIDA
EXPRESSWAY
AUTHORITY



All Electronic Tolling (AET)

- First in Central Florida
- No Toll Plazas – No Cash
- Enhances Safety
- Maximizes Convenience
- AET Info on Website
- Reduces Noise & Pollution
- Improves Mobility
- Saves Money



FDOT Section Tolls

FDOT Wekiva Parkway Toll Rates

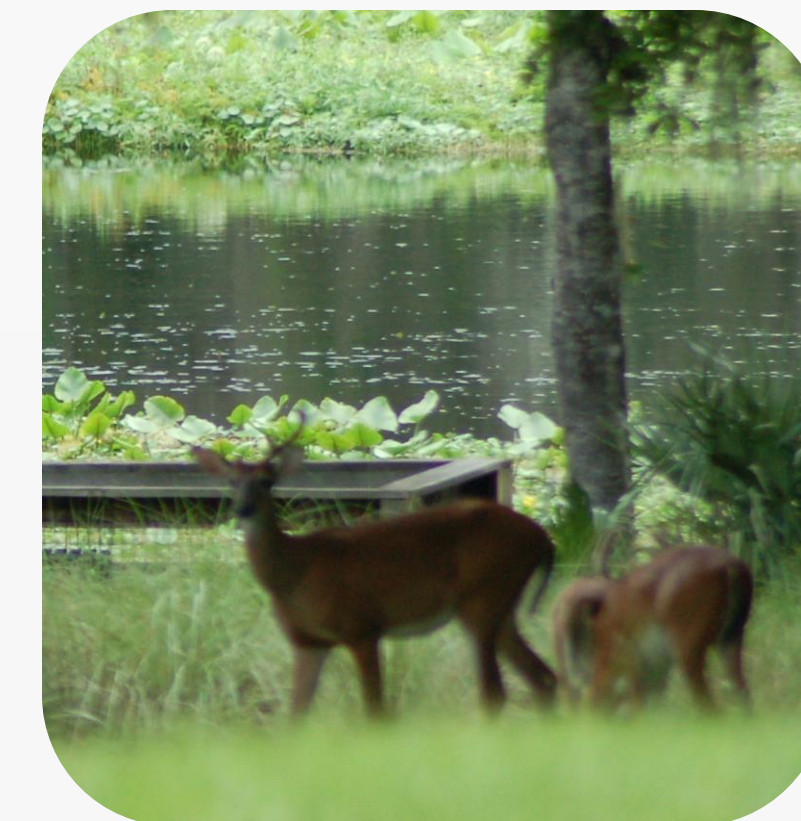
Mile-Post - Description	Section	SunPass Rate					TOLL-BY-PLATE Rate				
		2 axle	3 axle	4 axle	5 axle	Add'l axles	2 axle	3 axle	4 axle	5 axle	Add'l axles
1-PLAZA (Between Interstate 4 and Orange Boulevard)	8	\$0.50	\$1.00	\$1.50	\$2.00	\$0.50	\$0.75	\$1.50	\$2.25	\$3.00	\$0.75
2-PLAZA (Ramp at SR 46)	7A	\$0.25	\$0.50	\$0.75	\$1.00	\$0.25	\$0.50	\$1.00	\$1.50	\$2.00	\$0.50
7-PLAZA (Between Ramps East of River and SR 46)	6	\$1.00	\$2.00	\$3.00	\$4.00	\$1.00	\$1.25	\$2.50	\$3.75	\$5.00	\$1.25
11-PLAZA (Between SR 46 and Mount Plymouth Road)	4B	\$0.75	\$1.50	\$2.25	\$3.00	\$0.75	\$1.00	\$2.00	\$3.00	\$4.00	\$1.00

Toll-By-Plate collects tolls by taking a photo of a vehicle's license plate as it travels through an FDOT tolling location. It then mails a monthly bill for the tolls, **plus a \$2.50 administrative charge**, to the registered owner of the vehicle.

CFX Section Tolls Being Finalized

Protecting Nature

- **Wekiva River: Outstanding Florida Water & National Wild & Scenic River**
- **Authorized: 2004 Wekiva Parkway & Protection Act**
 - **Setting Aside More than 3,400 Acres for Conservation**
 - **Largely Elevated to Reduce Accidents Between Vehicles & Wildlife**
 - **Several Wildlife Bridges**
 - **Moving CR 46A Out of Seminole State Forest**
 - **Limited Interchanges (Curb New Development)**



Protecting Nature – Sections 4A & 4B



Wekiva Parkway Trail

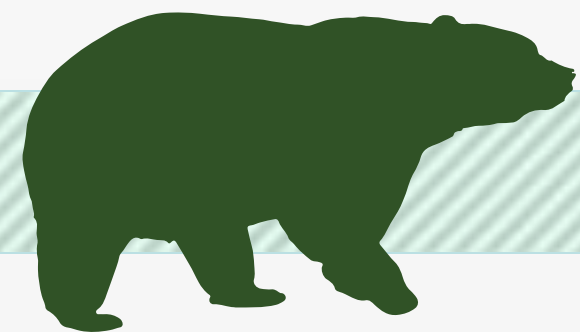
10 Miles

Construction: 2017-2021

**Local Coordination:
Lake, Orange & Seminole Counties**

Connections:

- ✓ **West Orange Trail Extension**
- ✓ **Lake-Wekiva Trail (Planned)**
- ✓ **Seminole-Wekiva Trail Extension**



WEKIWA PARKWAY

Completing Central Florida's Beltway

2020

2019

2019

2021

2018

2020-21

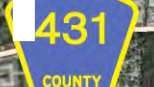
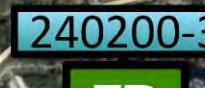
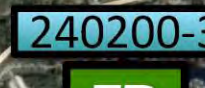
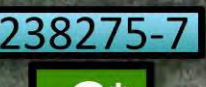
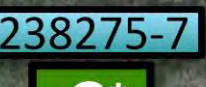
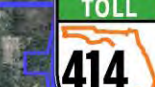
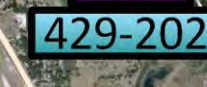
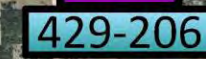
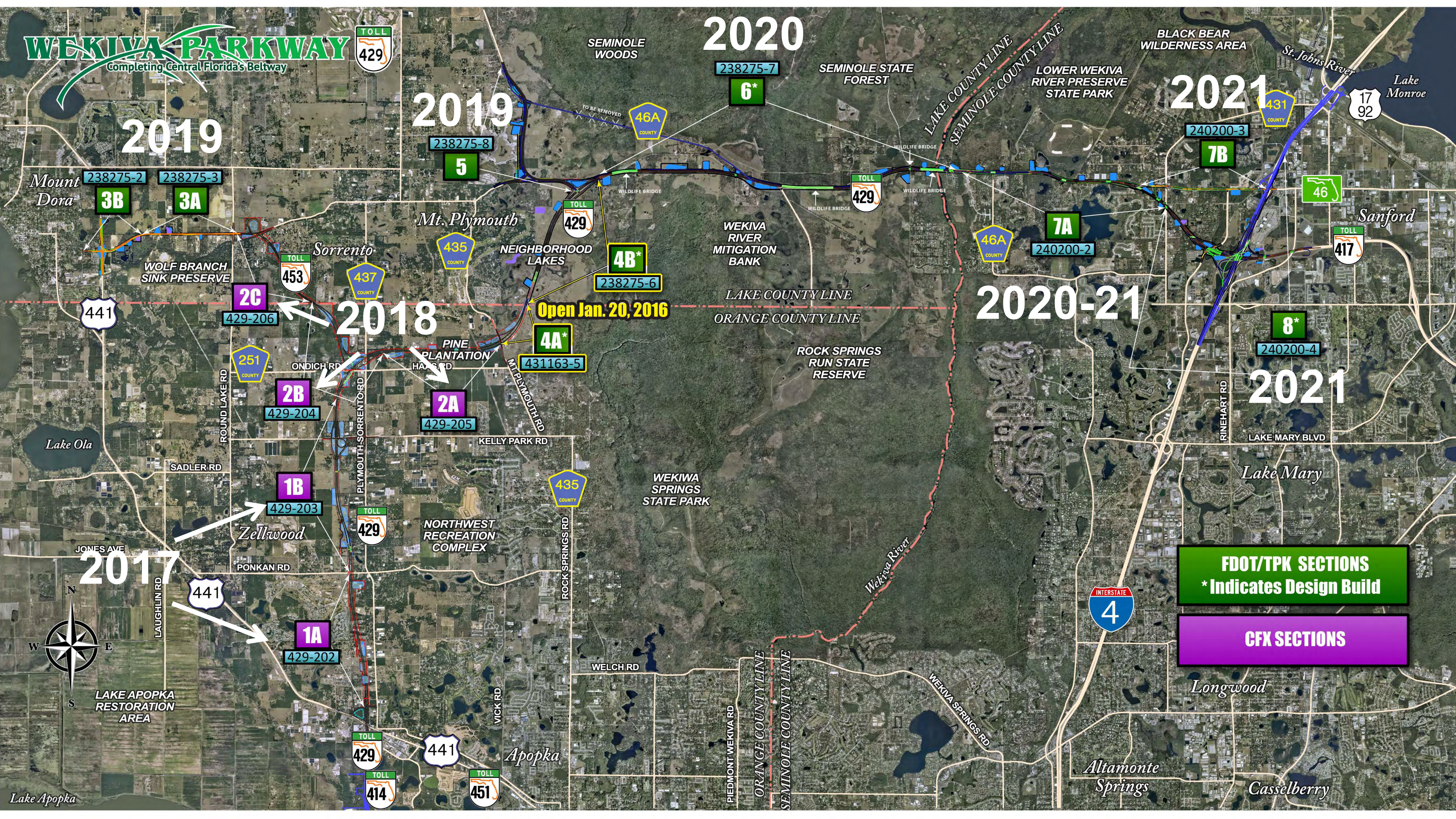
2021

2017

Open Jan. 20, 2016

FDOT/TPK SECTIONS
* Indicates Design Build

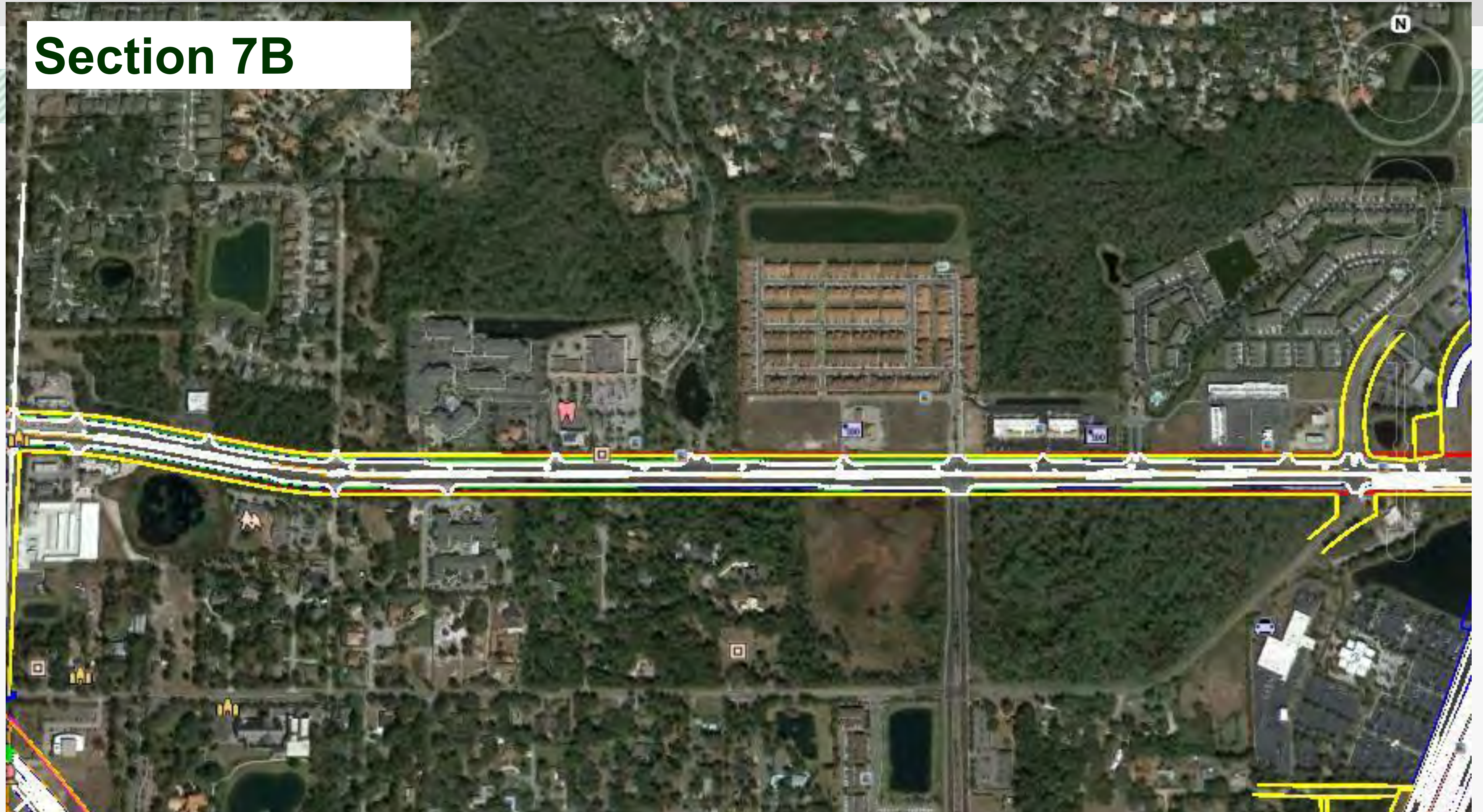
CFX SECTIONS



Section 7B Non-tolled Section



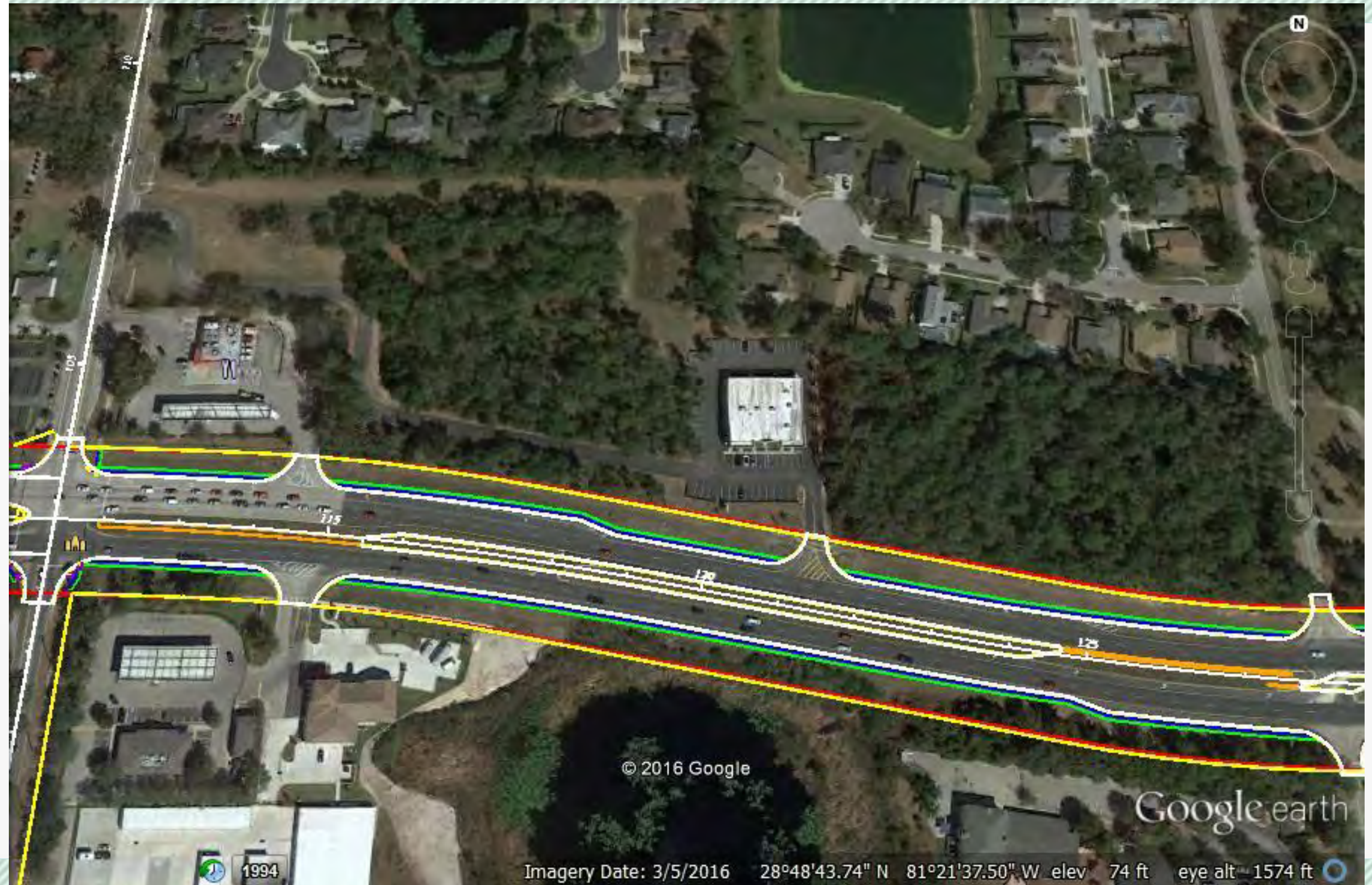
Section 7B



- Non-tolled Road Improvements
- Center Road to I-4
- Design Ad: March 2016

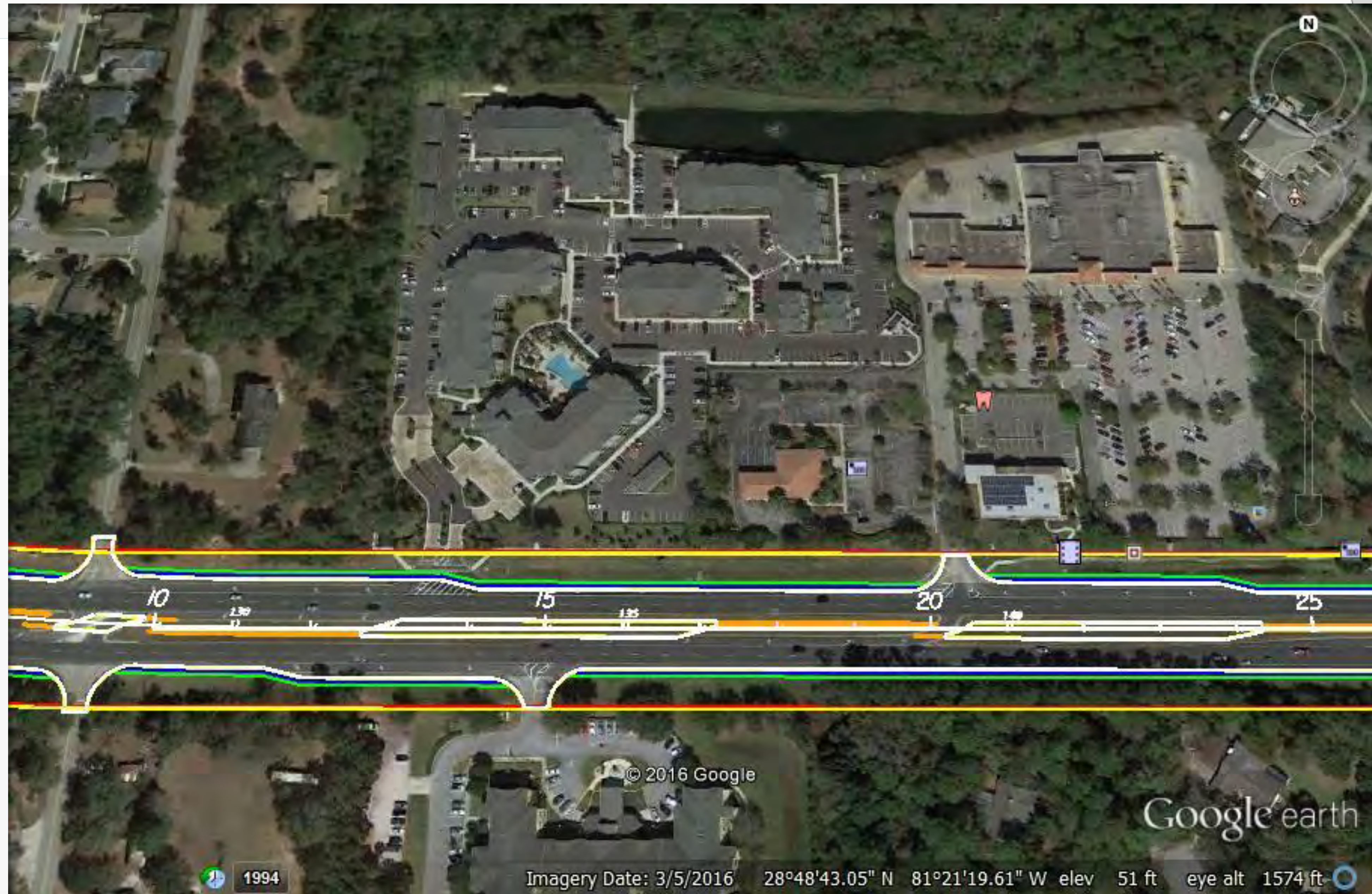
- Improvements Within Existing ROW
- Design Start: September 2016
- Construction Start: 2019

Section 7B – Orange Blvd to Sta. 130

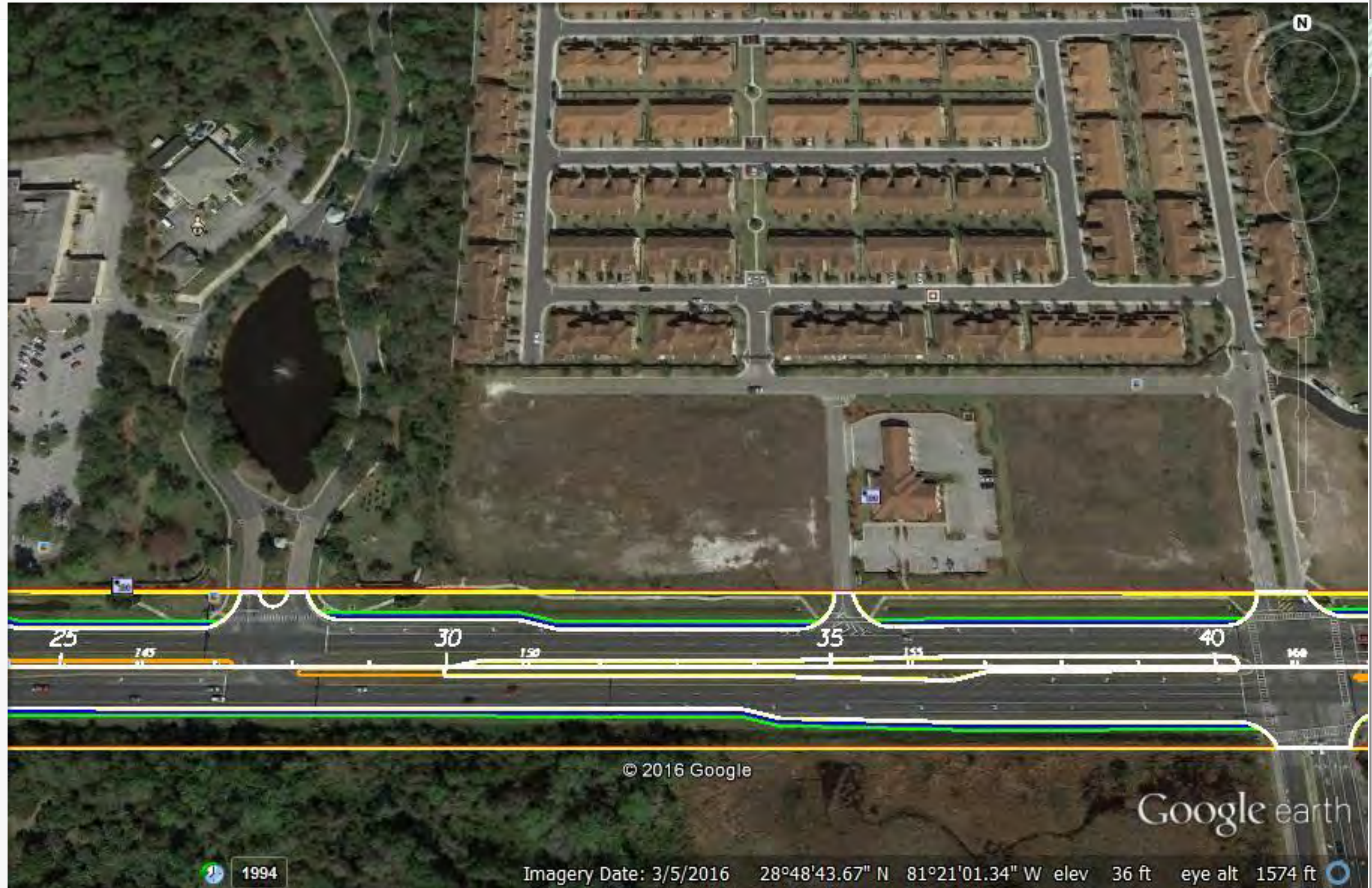


Imagery Date: 3/5/2016 28°48'43.74" N 81°21'37.50" W elev 74 ft eye alt 1574 ft

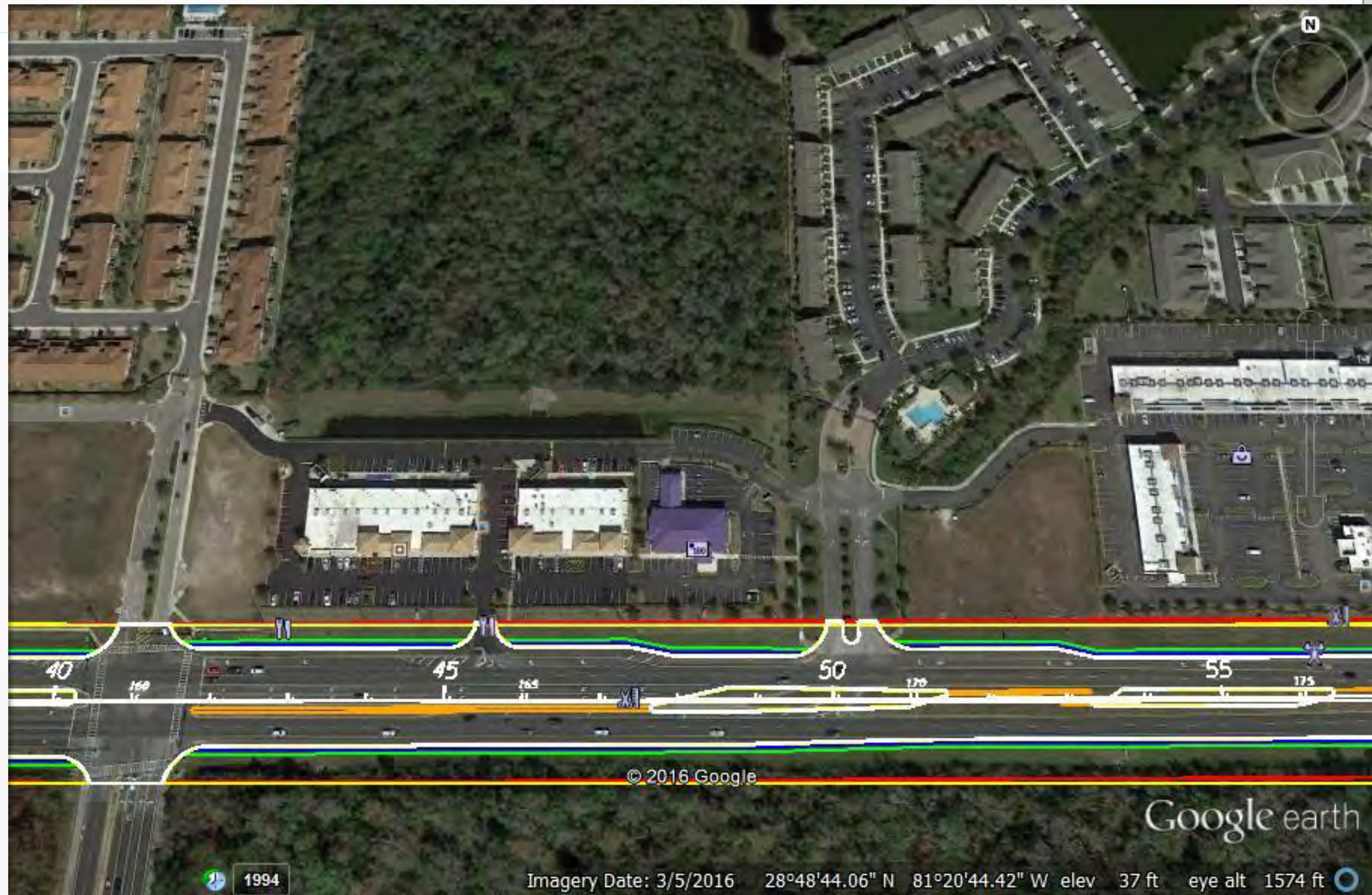
Section 7B – Sta. 130-145



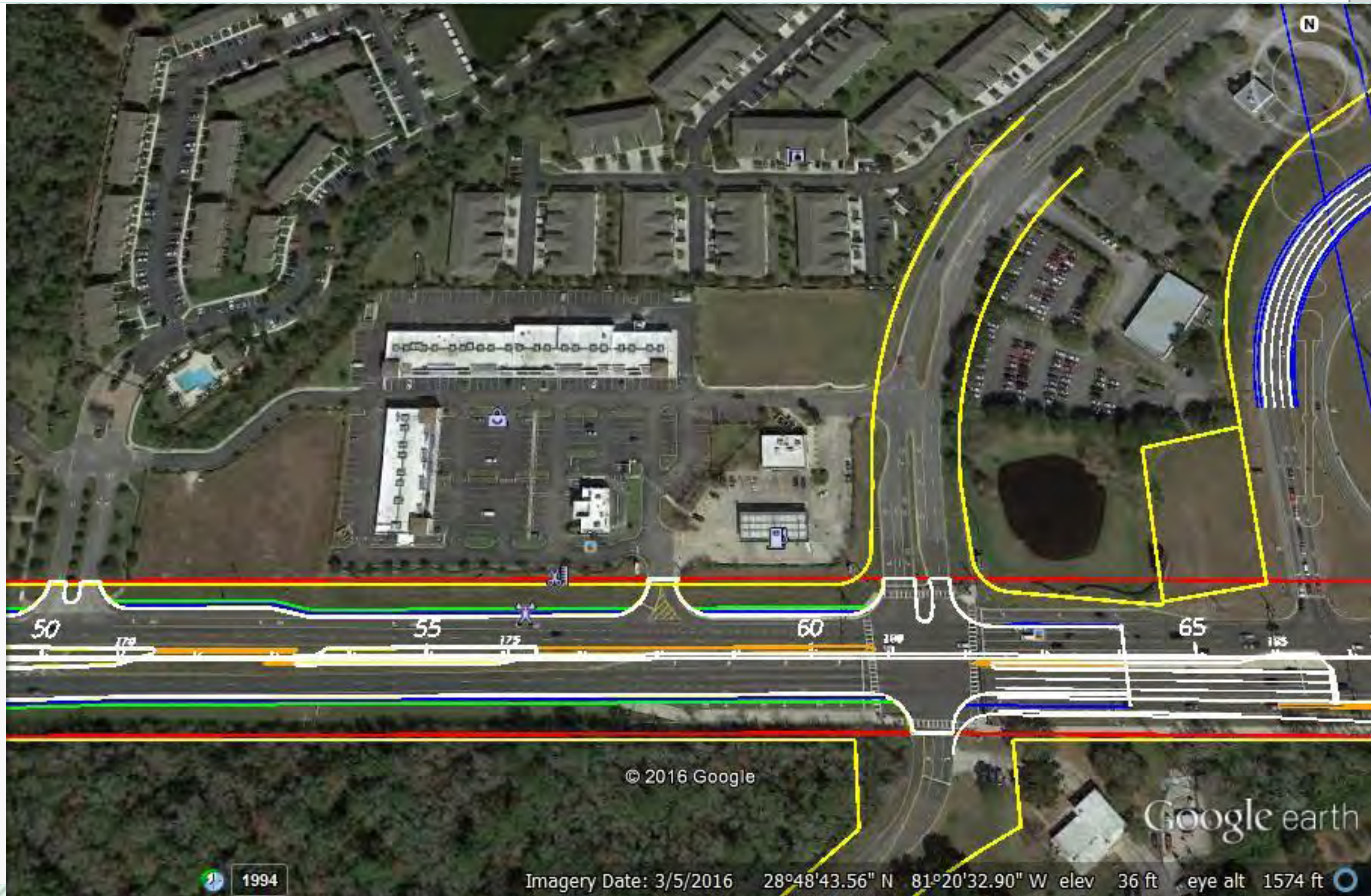
Section 7B – Sta. 145 - 160



Section 7B – Sta. 160-175



Section 7B – Sta. 170-185

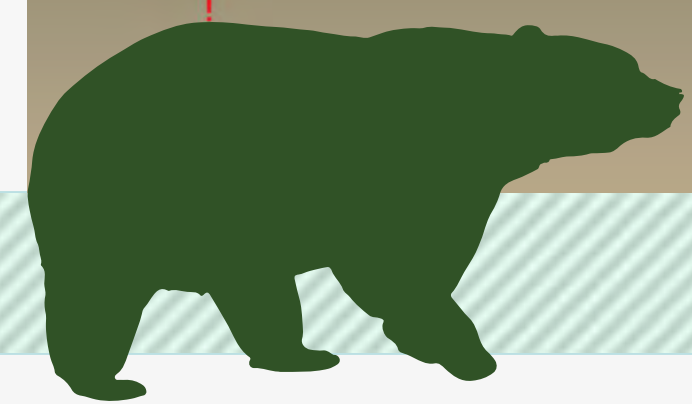
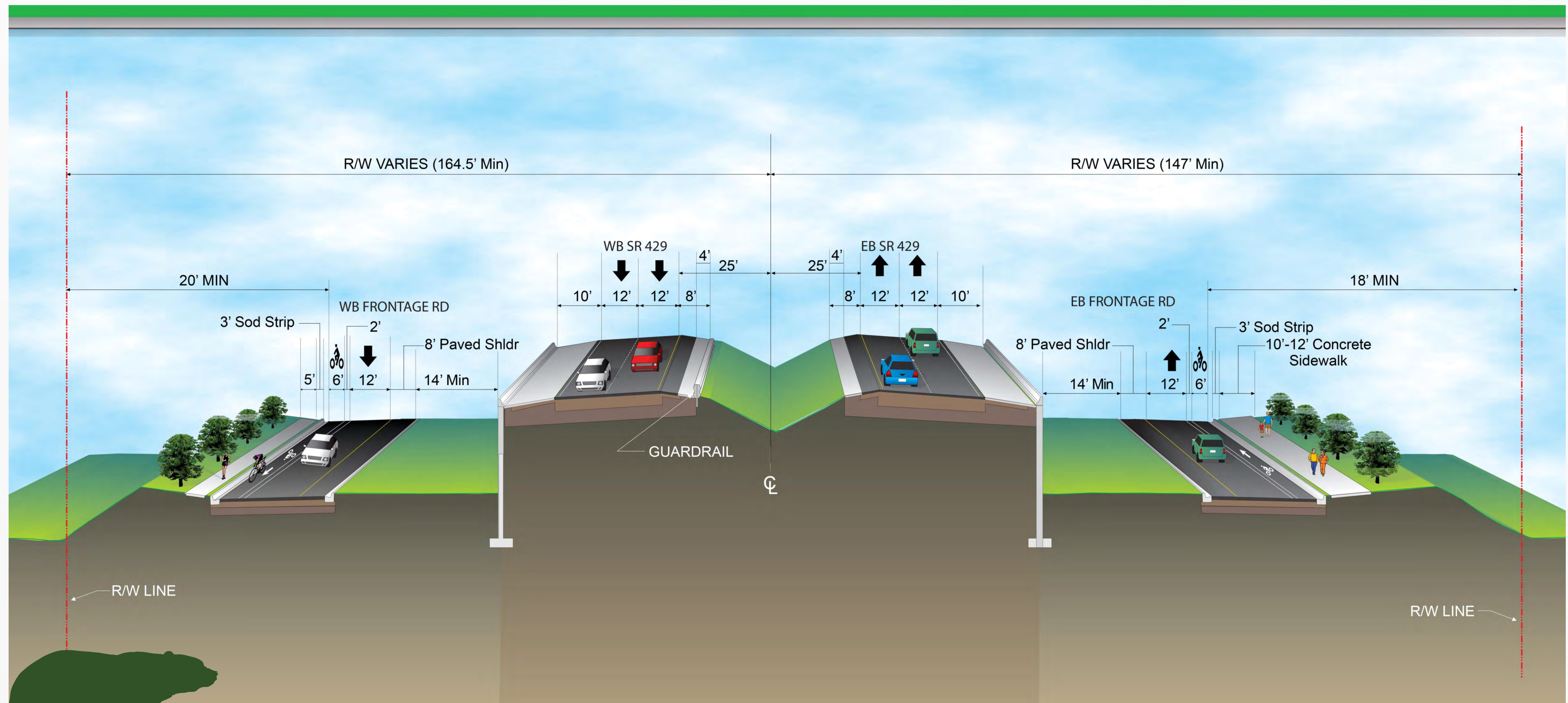


Section Details

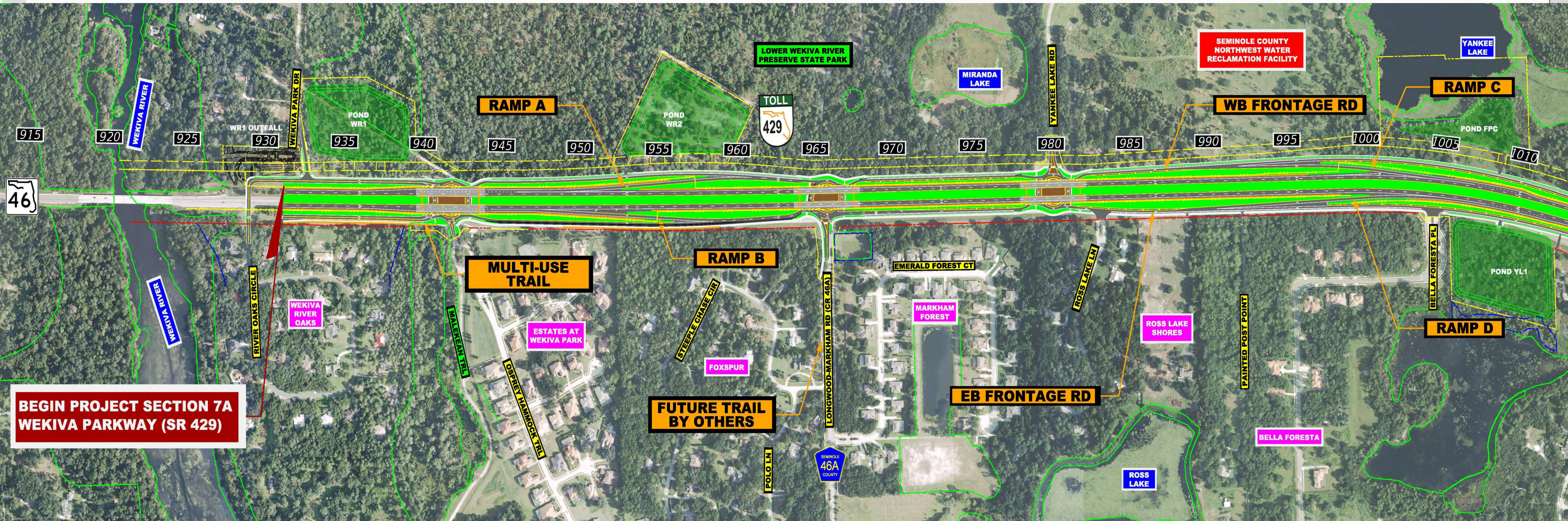
Section 7A



Section 7A - Typical Section



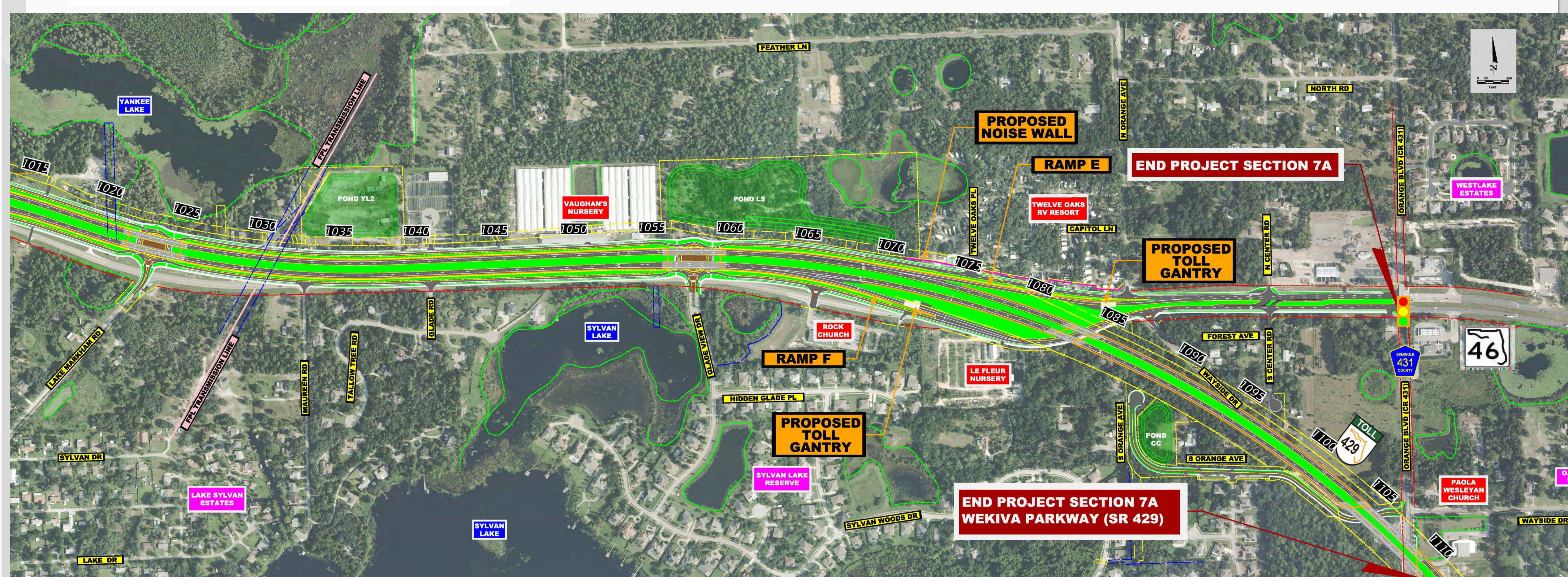
Section 7A - West



- Elevated Mainline: MSE Wall Support
- One-Way Frontage Roads
- Six Slip Ramps

- Five Roundabouts: Hardscape Treatments
- FL I-96 Beams: Osprey Hammock Bridge
- Trail Ends: Longwood Markham Road

Section 7A - East



- Roundabouts: Lake Markham & Glade View
- Toll Gantry
- SR 46 Slip Ramps

- 14 Bridge Structures
- Medium Span Concrete Girders

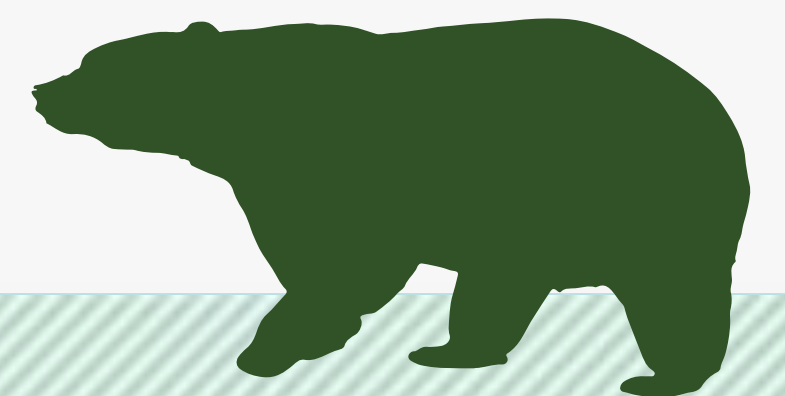
Section 7A – Roundabout Concept



Lighting is planned at roundabout approaches & under bridges. No lighting on the parkway mainline.

Section 7A – Procurement Schedule

- **CEI Ad:** July 2017
- **Contractor Ad:** October 2017
- **CEI Selection:** November 2017
- **Contractor Selection:** December 2017
- **Construction:** Spring 2018



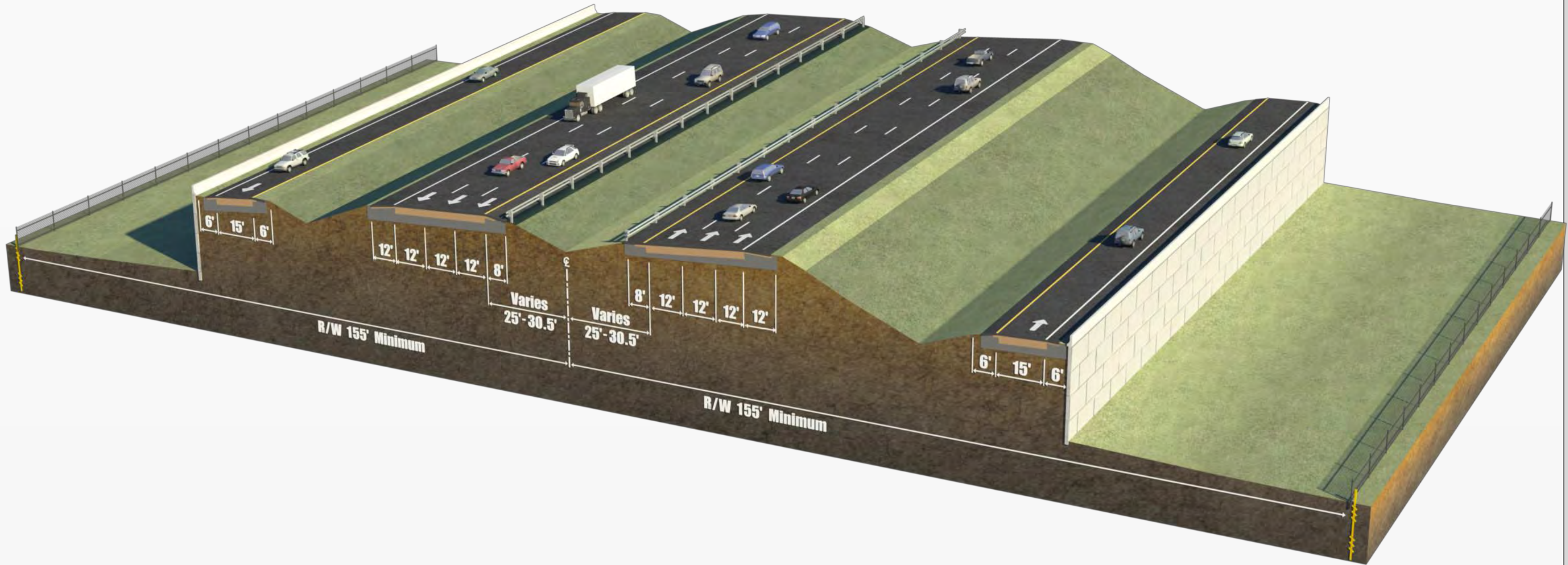
Section 8



Section 8 - Changes Since 2013 Design Update

- Eliminates Impact to Seminole Towne Center
- Eliminates Third & Fourth Level Flyover Bridges
- Keeps SR 417 Ramp Connection to International Parkway
- Adds New Pond Location South End of Atlantic & Metz Avenues

Section 8 - Typical Section at Tall Trees



Section 8 - Rendering at Tall Trees



Wilson Road: 4 Bridges

Height: 23 Ft.
(Top of Barrier Wall)

Landscaping:
Future Project

Safety Lighting:
Bridge Underdecks
& Interchanges

Future Construction Impacts

Affected Side Streets:

Orange Blvd.
Wayside Dr.
Wilson Rd.

International Parkway
SR 417
I-4



Construction Vehicles
Detours
Pile Driving
Noise
Night Work

Road & Lane Closures
Utility Work
Dust
Vibration

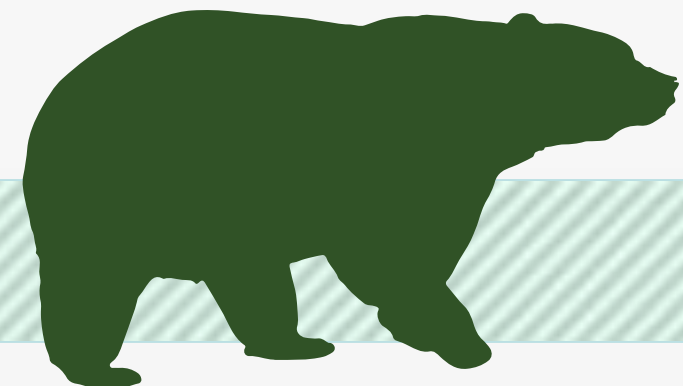


Section 8 – Projected Traffic

Opening Year (2021)	Design Year (2032)
43,000	82,500
(Vehicles Per Day)	(Vehicles Per Day)

Section 8 – What’s Next?

- **Continued Agency & Community Coordination**
- **Right-of-Way Acquisition: November 2016 – March 2018**
- **Advertise for Bids: January 2018**
- **Construction Begins: October 2018**
- **Open to Traffic: Late 2021 (Wekiva Parkway Complete)**



For More Information:

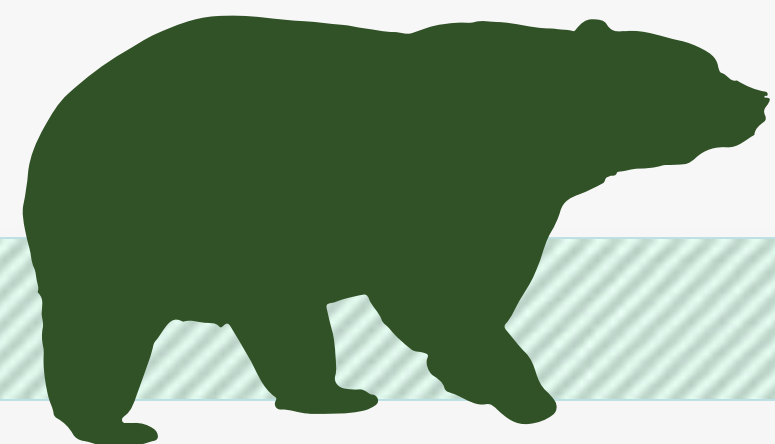
Mary Brooks

Public Information Officer

C: 407-694-5505

E: Info@wekivaparkway.com

W: www.wekivaparkway.com



The screenshot shows the Wekiva Parkway website with the following sections:

- CONSTRUCTION UPDATES:** Welcome to your construction information source for the Wekiva Parkway, the 25-mile toll road that will complete Central Florida's Beltway. Here you can find out about construction schedules, lane and road closures, and detours. You can also view the latest community presentations, or request an update for your group. Just click on the appropriate button below.
- SCHEDULE:** Check out the latest construction schedule for the Wekiva Parkway. Includes a Gantt chart showing construction progress from February 2013 to early 2016.
- ALERTS:** Prepare for your travel by finding out the latest news on lane and road closures and more. Includes an image of orange traffic cones.
- COMMUNITY PRESENTATIONS:** Schedule a project update for your community or group. Check out the latest presentations on the Wekiva Parkway. Includes an image of a community meeting.
- VISUAL GALLERY:** Want to see the latest photos and video on how the Wekiva Parkway is taking shape? CLICK HERE! Includes an image of a bridge under construction.
- ALERTS (Right Sidebar):** Click on link for details. September 2015: CPX Section 1A, SR 429 Connector Road Lane Closing. August 2015: CPX Section 1A, SR 429 Connector Road Lane Closing. August 2015: CPX Section 1A, Nighttime SR 429 Ramp Closure to Westbound Connector Road. August 2015: CPX Section 1B Work Off with Gopher Tortoise Relocation. August 2015: New Photos of FDOT Sections 4A & 4B. August 2015: Bridge Pile Driving to Begin on CPX Section 1A. August 2015: CPX Section 1A, Be Alert for Intermittent Lane Closures on SR 429 Connector Road. July 2015: CPX Section 1A, Be Alert for Turn Lane Closure on SR 429 Connector Road. July 2015: Construction Will Underway on CPX Section 1A. June 2015: CPX Begins Building Section 1A on June 5. June 2015: Intermittent Flagging Operations For Section 4 on SR 429.
- CONTACT US (Right Sidebar):** Mary Brooks, Public Information Officer, Info@wekivaparkway.com, 407-694-5505. Includes an image of a bridge.

twitter

facebook